

**Relentless Innovation**  
for your diagnostic confidence

**SAMSUNG**

# Empowering confidence and quality in equine ultrasound



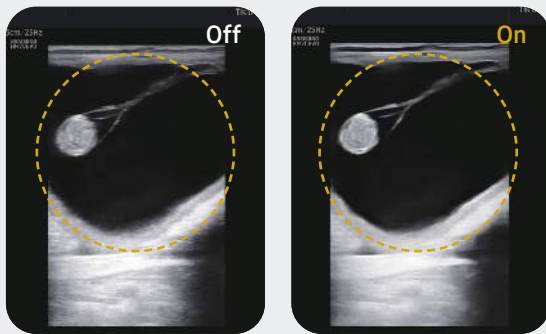
# Adding value to equine imaging and diagnosis

Samsung ultrasound systems for equine offer superb image quality, advanced diagnostic features, ease of use, and portability. Whether you are focusing on MSK, cardiac, abdomen, or reproduction, our ultrasound systems are specifically designed for an equine veterinarian who needs to deliver a fast and accurate diagnosis. Samsung equine ultrasound systems are developed to withstand daily use so that veterinarians can focus on the exam more efficiently and effectively.

## Sophisticated 2D and color image processing

### Reduce noise to improve 2D image quality

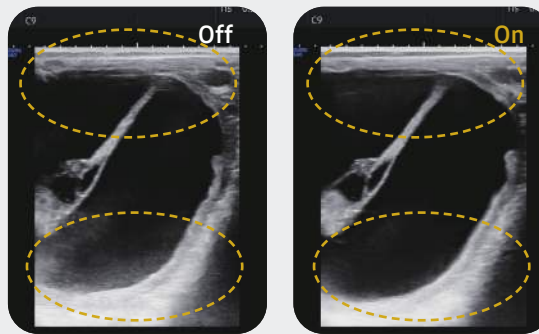
**ClearVision** is a noise reduction filter that enhances the edge contrast and creates sharp 2D images for optimal diagnostic performance. In addition, it provides application-specific optimization and advanced temporal resolution in live scan mode.



Abdomen  
(6 weeks pregnant)

### Provide uniform imaging performance of overall image area

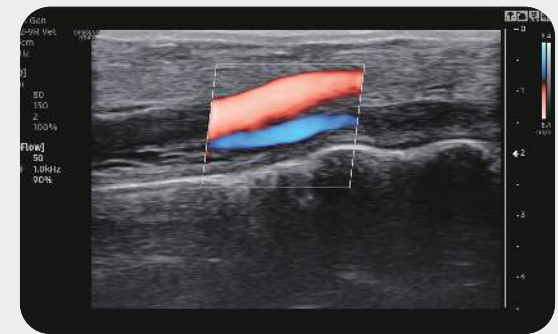
**S-Harmonic™** mitigates the signal noise, enhances contrast, and provides uniform image performance of the overall image area from near-to-far.



Abdomen  
(Foal pregnancy)

### Examine peripheral vessels with directional Power Doppler

**S-Flow™**, a directional Power Doppler imaging technology, can help to detect even the peripheral blood vessels. It enables accurate diagnosis when the blood flow examination is especially difficult.



Limb vessel

## Enriched features & interventional solutions

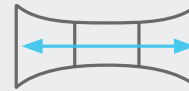
### Display needle tip clearly

**NeedleMate+™** delineates needle location when performing interventions such as nerve blocks. Improved accuracy and efficiency in the procedure are possible with beam steering added to NeedleMate+™.



### Display in extended field-of-view

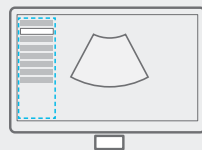
**Panoramic+** imaging displays as an extended field-of-view so users can examine wide areas that do not fit into one image as a single image. Panoramic+ imaging also supports angular scanning from linear transducer data acquisition.



## Improved workflow efficiency

### Build predefined protocols for streamlined process

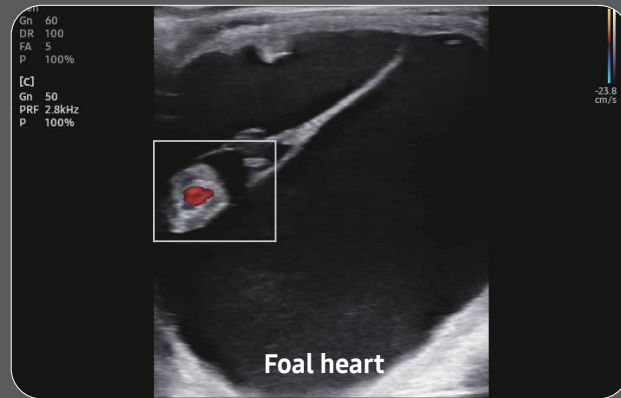
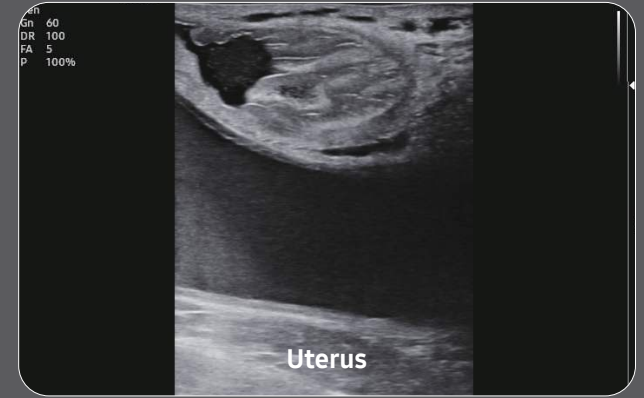
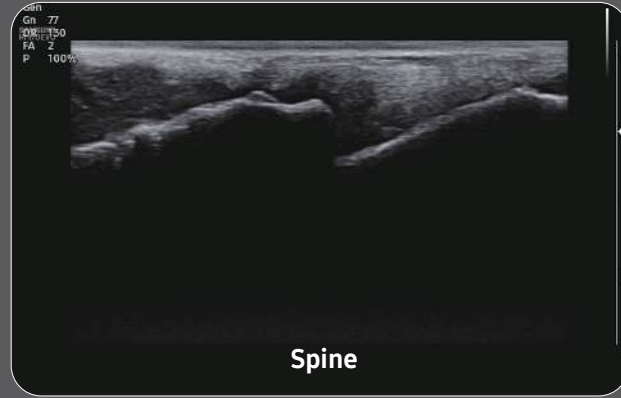
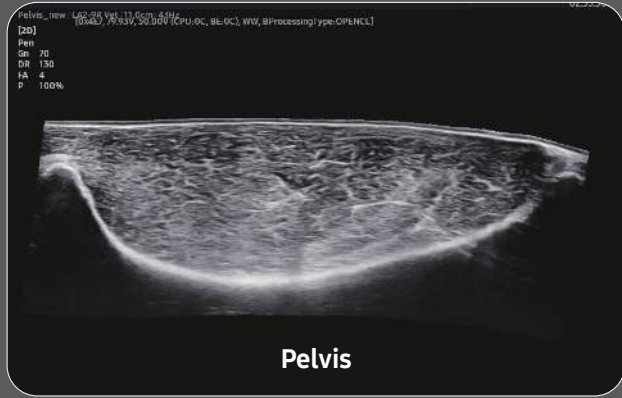
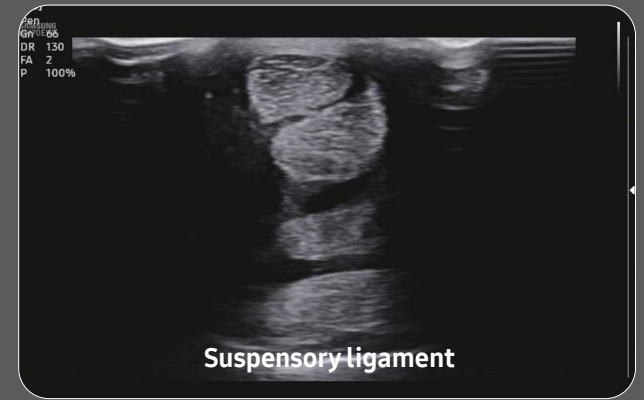
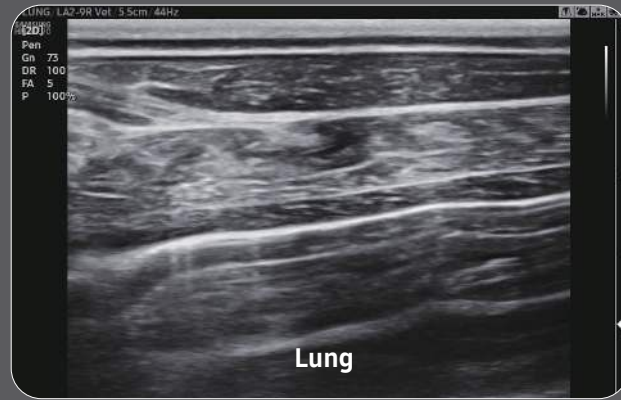
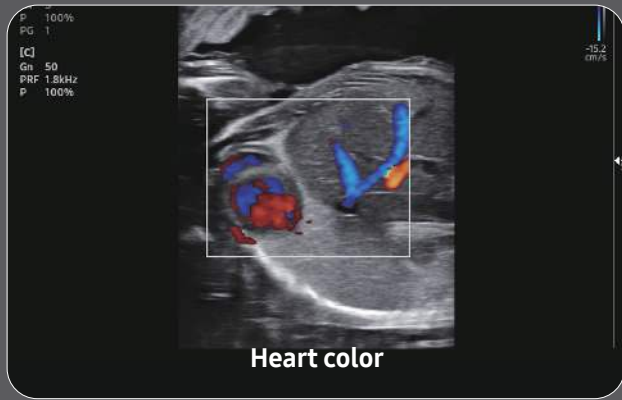
**EzExam+™** enables you to build or use a predefined protocol, and assign protocols for examinations that are regularly performed in the hospital in order to reduce the number of steps that you have to go through.



### Select transducer and preset combinations in one click

**QuickPreset** allows the user to select the most common transducer and preset combinations in one click.







# Ultrasound systems for equine

## HM70 EVO

### Mobile excellence

The HM70 EVO is a high-performance hand-carried ultrasound system combining streamlined workflow, durability, and high-resolution imaging that can be used in a variety of clinical situations.



#### Sophisticated 2D & color image processing

S-Harmonic™, HQ-Vision™<sup>1</sup>, ClearVision, MultiVision<sup>1</sup>, S-Flow™

#### Enriched features & interventional solutions

Panoramic+<sup>1</sup>, NeedleMate+™<sup>1</sup>

#### Improved workflow efficiency

EzExam+™<sup>1</sup>, QuickPreset, QuickExam, QuickScan™, Auto Delete, QuickSave, Full Screen, EzCompare™, Measure Navigation

#### Ergonomics for your comfort

Cart<sup>1</sup> (Gas Lift, On Cart Power Outlets), Keyskin, Carrier Package, 15-inch LED Monitor, Cart Option (3 Transducer Ports, Extended Power Pack, BW Printer Assist)

## HS40

### Establish everyday efficiency

Samsung's advanced yet budget-friendly tools, previously exclusive to our platforms, can enhance various application exam capabilities for efficient and effective care.



#### Sophisticated 2D & color image processing

S-Harmonic™, HQ-Vision™<sup>1</sup>, ClearVision, MultiVision<sup>1</sup>, S-Flow™

#### Enriched diagnostic features & interventional solutions

Panoramic+<sup>1</sup>, NeedleMate+™<sup>1</sup>

#### Improved workflow efficiency

EzExam+™<sup>1</sup>, QuickPreset, Measure Navigation, EzCompare™, QuickScan™

#### Ergonomics for your comfort

21.5-inch LED Monitor, 10.1-inch Touch Screen, Adjustable Control Panel, Gas Lift, Side Storage, Rear Tray, Endocavity Transducer Holder, Gel Warmer, SSD Drive, BatteryAssist™, Print Cover

## Samsung healthcare cybersecurity

To address the emerging need for cybersecurity, Samsung provides a solution to support our customers by offering the tools to protect against cyberthreats that may compromise invaluable patient data and ultimately degrade the quality of care.



Intrusion prevention



Access control



Data protection

# Dedicated transducers for equine

## Linear array transducers



LA2-9R Vet



LN5-12



LA3-16AD



LS6-15 <sup>a</sup>

## Curved array transducers



CA1-7AD



CA2-8AD



CA4-10M



PN2-4

## Phased array transducer

\* The products, features, options, and transducers may not be commercially available in some countries.

\* Sales and Shipments are effective only after the approval by the regulatory affairs. Please contact your local sales representative for further details.

\* This product is a veterinary medical device, please read the user manual carefully before use.

1. Optional feature which may require additional purchase.

a. Transducer only supported for the HS40 ultrasound system.

## SAMSUNG MEDISON CO., LTD.

© 2022 Samsung Medison All Rights Reserved.

Samsung Medison reserves the right to modify the design, packaging, specifications, and features shown herein, without prior notice or obligation.