

VETERINARY ENDOSCOPE SYSTEM



WELCOME TO FOLLOW



🔍 | SEESHEEN ENDOSCOPE

SEESHEEN | TK-VETKIT



TK VETKIT CO.,LTD.

ADD:Plant 1, No. 199, Shui'an 1st Road, Xiangzhou District, Zhuhai  
TEL:+86-755-23761871  
EMAIL:intl@seesheen.com  
WEB:www.seesheen.com

C-TKZH-202407-V3.0



## Company Introduction

Zhuhai TK VETKIT Medical Technology Co., Ltd., established in 2021, specializes in the R&D, production, sales, and service of veterinary endoscopes and related surgical consumables. As a wholly-owned subsidiary of Zhuhai Seesheen Medical Technology Co., Ltd., TK VETKIT offers comprehensive endoscopy solutions for veterinary applications. All our products are independently developed, offering a comprehensive range of endoscopes in various specifications. These endoscopes can be paired with multiple image processors to deliver clear and bright images, fully addressing the diagnostic and treatment needs of large, medium, and small animals. **Our products are sold both domestically and internationally, including to over 80 countries such as the United Kingdom, France, the United States, Australia, Spain, and Brazil. Our domestic sales and service team covers more than 30 provincial-level administrative regions.**

## Market Distribution

Global professional sales team



Zhuhai Seesheen Medical Technology Co., Ltd., established in 2014, holds over 139 national patents and more than 22 software copyrights. Over the years, Seesheen has developed into a leading enterprise in the field of precise endoscopy in China, earning numerous honors such as "National Specialized and New 'Little Giant' Enterprise," "National High-Tech Enterprise". With over 400 employees, Seesheen's products are distributed to over 3,000 medical institutions both domestically and internationally.

Our company has a robust quality management system and a team of professional engineers. Our subsidiary, Zhuhai JieKang Medical Equipment Repair Co., Ltd., specializes in third-party endoscope repair services. With a 3,000-square-meter repair workshop, we handle over 3,000 endoscope repairs annually. Our strong technical capabilities and reliable after-sales service ensure customer satisfaction.



## Overview of Customer Endoscope Installations



## LED Light Source L-10

### Features

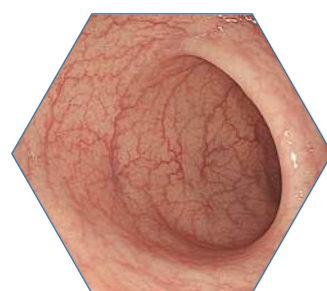
- High brightness LED, good color restoration and long operation life.
- Touch-screen control, friendly interactive interface.
- Brightness with 9 levels adjustment, suitable for a variety of scenes.
- All in one light source + water/air pump.



## Specification

Model	Power Voltage	Light	Air Pump Pressure	Diameter	Brightness	Air Pump
L-10	100-240V AC	LED	45Kpa-65Kpa	φ8.5mm	9 levels	3 levels

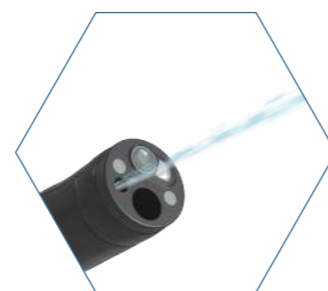
## Features



FHD Image



Wide Angle



Water Jet



Angle Lock



Big Forceps Channel



Function Buttons

## Portable System

- Integrated design of mainframe, light source and monitor
- Medical report management system with touch screen
- Inside Battery ≥ 4hours working time



## Tower System

- High performance touch screen endoscopic image processor
- Air/water pump + cold light source integrated high-end equipment
- Medical report management system
- Multifunctional trolley



## Specification

Model	Distal-end	Insertion Tube	Working Channel	Working Length	Up/Down	Left/Right	View Angle	Function Keys	Water Jet
GU-160H	6.8mm	6.8mm	2.2mm	1500mm	U210°, D130°	L100°, R100°	120°	3	/
GU-170HQ	7.8mm	8.0mm	2.8mm	1500mm	U180°, D130°	L100°, R100°	120°	3	/
GU-170FH	7.8mm	8.0mm	2.2mm	1500mm	U180°, D130°	L100°, R100°	140°	3	/
GU-190FHP	9.2mm	9.3mm	2.8mm	1500mm	U180°, D130°	L100°, R100°	140°	3	Yes
GU-190FHPL	9.2mm	9.3mm	2.8mm	3000mm	U180°, D130°	L100°, R100°	140°	3	Yes
GU-1B0FHPL	11.5mm	11.3mm	3.2mm	3500mm	U180°, D180°	L160°, R160°	140°	3	Yes
GF-14F	5.8mm	5.8mm	2.2mm	1500mm	U210°, D130°	L100°, R100°	120°	3	/
GF-14	6.8mm	6.8mm	2.2mm	1500mm	U210°, D130°	L100°, R100°	120°	3	/
GF-14Q	7.8mm	8.0mm	2.8mm	1500mm	U180°, D130°	L100°, R100°	120°	3	/

## LED Light Source L-10

### Features

- ⦿ High brightness LED, good color restoration and long operation life.
- ⦿ Touch screen control, friendly interactive interface.
- ⦿ Brightness with 9 Level adjustment, suitable for a variety of scenes.
- ⦿ All in one light source +water/air pump.



## Specification

Model	Power Voltage	Light	Air Pump Pressure	Diameter	Brightness	Air Pump
L-10	100-240V AC	LED	45Kpa-65Kpa	φ8.5mm	9 Levels	3 Levels

## Intelligent Image Processor D-1322



### Features

- ⦿ 21.5 inch touch-screen image processor
- ⦿ Full HD 1920×1080
- ⦿ Medical record management system
- ⦿ Support wire and wireless network

## TK-VETKIT Light Cord



## Rigid Scope



## TK-VETKIT Camera Head:CM-U12



### Features

- ⦿ Ergonomic design with lightweight, reduces surgeon fatigue during long procedures
- ⦿ IP67 Ingress Protection Rating,dust-proof and waterproof
- ⦿ Two-megapixel camera , full HD 1080P resolution
- ⦿ Camera head compatible with any rigid scope
- ⦿ Multi-function buttons, easily capturing and freezing FHD photos

## Application

Laparoscopy for dogs, cats, cattle, sheep, horses, pigs, laboratory animals, wild animals and some aquatic animals.

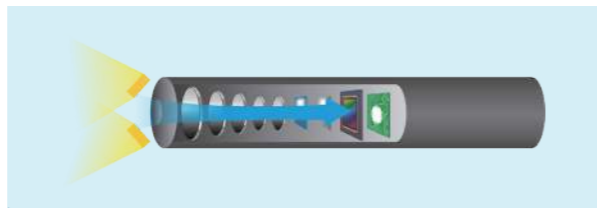


## Specification



NO.	Components	Model	Description
1	Camera Head	CM-U12	Full HD 1080P
2	Light Cord	LC-10	Compatible with any brand of rigid scope
3	Rigid Scope	LA-050301	Laparoscope 5.0mm diameter , 290mm working length, 30 degree
4	Rigid Scope	LC-1500	Laparoscope 5.0mm diameter , 290mm working length, 0 degree

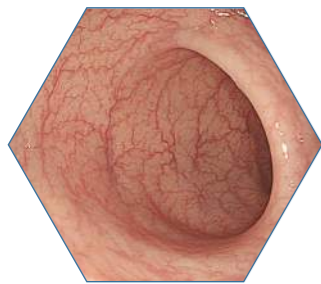
# EC Series *Portable Veterinary Endoscope System*



## CMOS+LED Technology

Non-fiber design makes it durable and easy for maintenance.

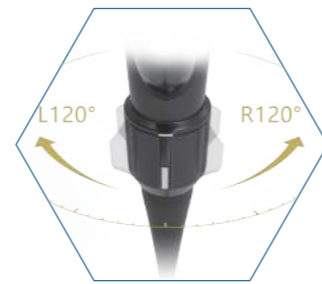
## Features



**High Definition**  
Perfect Image



**Multi-function Buttons**  
①Zoom ②Capture/Record ③Freeze



**120° Left/Right Rotation**  
Relieve fatigue of wrist rotation



**Detachable Structure**  
Compatible with all products



**Video Cable With 180° Rotation**  
Easy operation



**Water Vapor Outlet**  
Cleaning the camera

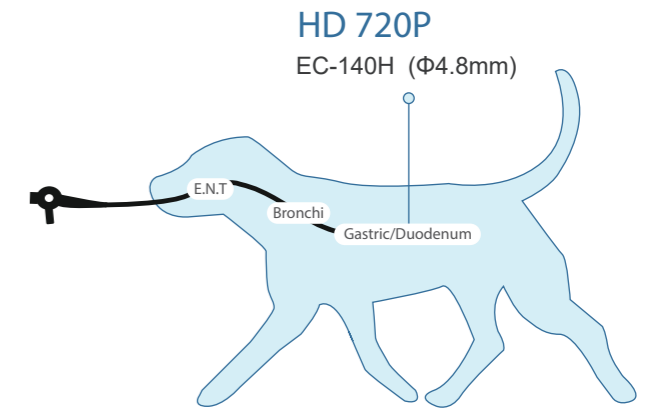
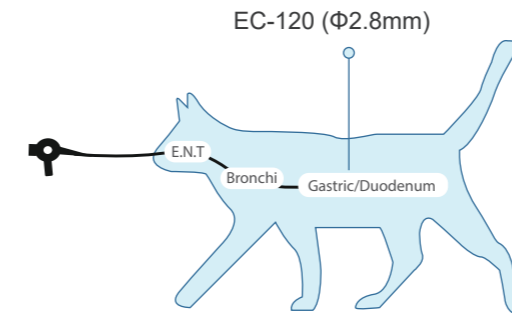
## Portable

Equipped with 10 inch image processor D-1211 or 4 inch processor D-1105



## Application

With slim diameter and 4-way angulation, EC-120, EC-130 and EC-140H are ideal for small animal applications, including bronchoscopy, rhinoscopy, oesophagus, foreign body retrieval, gastroscopy, cystoscopy, vaginoscopy, etc.

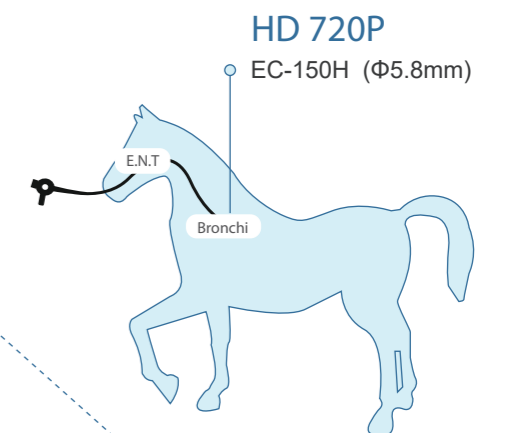


## Specification

Model	Distal-end	Insertion Tube	Working Channel	Working Length	Bending	Rotation	View Angle
EC-120	2.8mm	2.8mm	1.2mm	610mm	U210°, D130°	L120°, R120°	120°
EC-23FL	2.8mm	2.8mm	1.2mm	1000mm	U180°, D130°	L120°, R120°	120°
EC-130	3.8mm	3.8mm	1.5mm	1000mm	U180°, D130°	L120°, R120°	120°
EC-140H	4.8mm	5mm	2.0mm	1000mm	U180°, D130°	L120°, R120°	120°

## Application

With extended 1.5 meters working length and big working channel, EC-150H is ideal for equine applications, including upper and lower airway endoscopy, sinuscopy, vaginoscopy and hysteroscopy, etc.



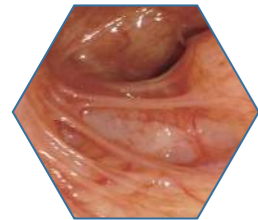
## Specification

Model	Distal-end	Insertion Tube	Working Channel	Working Length	Bending	Rotation	View Angle	Water Vapor Outlet
EC-150H	5.8mm	5.9mm	2.8mm	1500mm	U180°, D130°	L120°, R120°	120°	/
EC-250H	5.8mm	5.9mm	2.8mm	1500mm	U180°, D130°	L120°, R120°	120°	YES

# EU Series *Portable USB system*



## Features



**High Definition**  
Perfect Image



**CMOS+LED**  
No Fiber



**Big Channel**  
1.2 -2.8mm

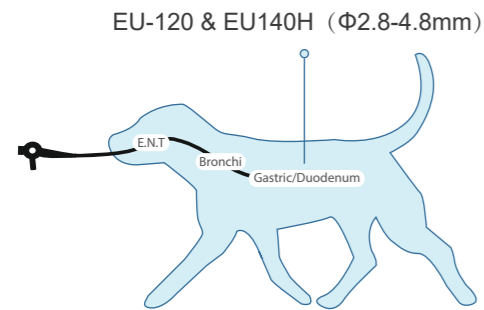


**Multi-function Buttons**  
①White Balance ②Brightness  
③Freeze

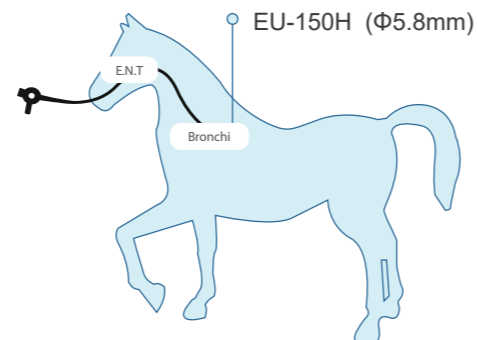


**Water Vapor Outlet**  
Cleaning the camera

## Application



Companion animals upper and lower respiratory tract.



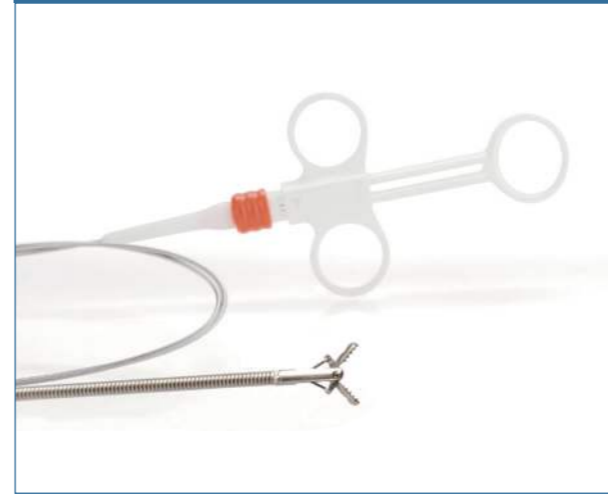
Large animal upper and lower respiratory tract.

## Specification

Model	Distal-end	Insertion Tube	Working Channel	Working Length	Bending	Rotation	View Angle	Water Vapor Outlet
EU-120	2.8mm	2.8mm	1.2mm	610mm	U210°, D130°	L120°, R120°	120°	/
EU-130	3.8mm	3.8mm	1.5mm	1000mm	U180°, D130°	L120°, R120°	120°	/
EU-140H	4.8mm	5mm	2.0mm	1000mm	U180°, D130°	L120°, R120°	120°	/
EU-150H	5.8mm	5.9mm	2.8mm	1500mm	U180°, D130°	L120°, R120°	120°	/
EU-250H	5.8mm	5.9mm	2.8mm	1500mm	U180°, D130°	L120°, R120°	120°	YES

# Disposable Endoscopic Accessories

## Disposable Endoscopic Biopsy Forcep



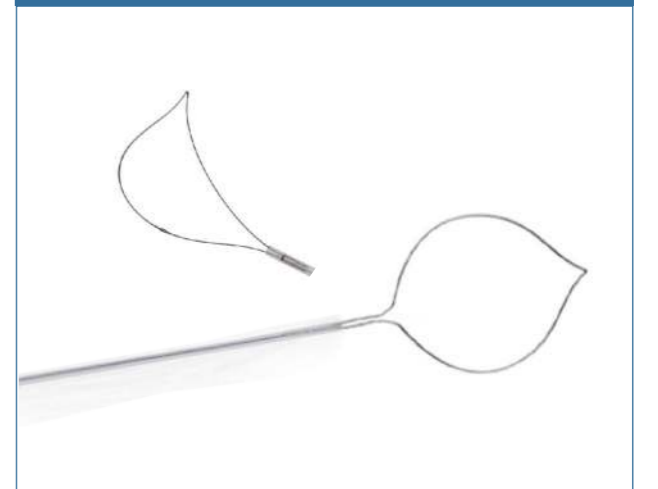
## Disposable Endoscopic Basket Grasping Forcep



## Disposable Endoscopic Spray Catheter



## Disposable Polypectomy Electric Snare



## Disposable Endoscopic Retriever



## Disposable Endoscopic Grasping Forcep

